

# Highland Forest - Lot #10

**\$563,700**

[www.Phelps-Dickson.com](http://www.Phelps-Dickson.com)



## Sales Information

Please contact

**John Hawkins**  
Fonville Morisey Realty  
**(919) 845-2325**

MLS 1612085  
Available Now

## BAYLOR



## Home Features

Design Style: 2-Story Traditional  
Beds: 4  
Bath: 4.5  
Garage: 2 Car + 1 Car  
Foundation: Crawl  
Screen Porch: 28' 8" x 11' 8"  
Lot Size: .925 Acres

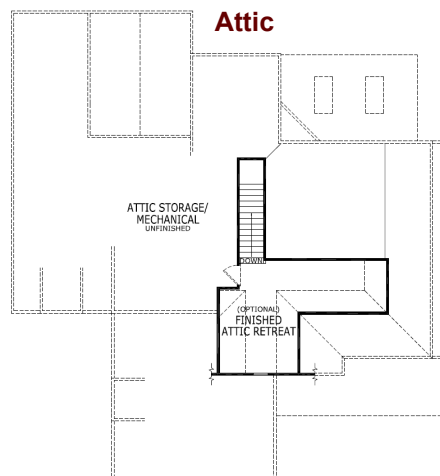
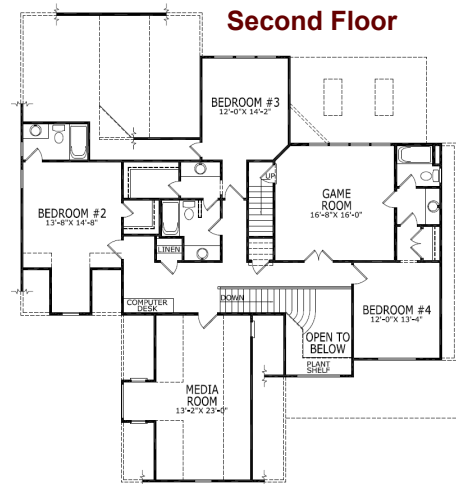
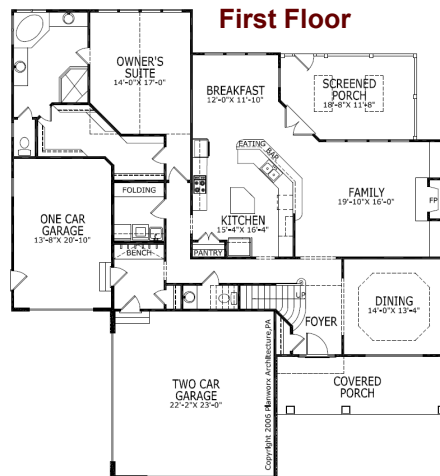
## Description

Upscale two-story home with covered front porch entry. Fireplace in family room. Large gourmet kitchen with eat-in breakfast room. Formal dining. Private downstairs owner's suite. Spacious bedrooms. Optional attic retreat.

## Directions

Highland Forest  
North Raleigh

From Creedmoor Road N (Hwy 50), take the Hwy 98 West exit ramp (towards Durham). Highland Forest is approximately 2 miles on the right.



First Floor	1,962 Sq Ft
Second Floor	2,023 Sq Ft
Optional Attic Retreat	440 Sq Ft
<b>Total Livable Sq Ft</b>	<b>3,985 Sq Ft</b>
1 Car Garage	287 Sq Ft
2 Car Garage	549 Sq Ft

Overall Dimensions 60'-10" x 65'-8"

Floor Plan Copyright ©2006 Planworx Architecture, PA  
Phelps-Dickson Builders, LLC



In an effort to continually improve our product we reserve the right to change specifications and price at any time without notice. Floor Plans may vary depending on elevations. Actual home may be the mirror image of floor plan shown depending on lot conditions. Measurements are approximate and may vary depending on options. Elevations are artist's renditions and should not be relied upon for specific details.